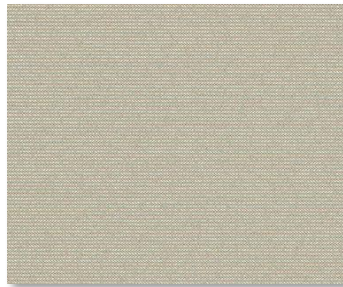


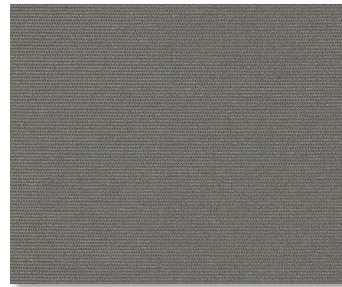
Vizela Translucent



618 MISSISSIPPI



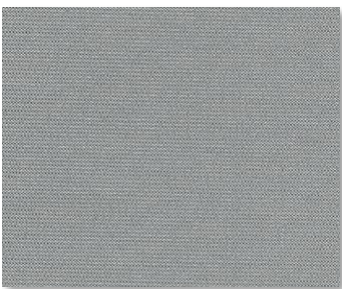
623 SAHEL



609 LOUTRE



600 BLANC



608 CHARTREUX

SPECIFICATION

WIDTHS 94.5"	FIRE CLASSIFICATION	NFPA 701-10 TM#1, California U.S. Title 19 CAN/ULC-S109-03 Small & Large Flame Test
ROLL LENGTH 36 Linear Yards	BACTERIAL AND RESISTANCE	ASTM E2180, ASTM G21
FABRIC WEIGHT 8.70 oz/yd ²	ACOUSTICAL PERFORMANCE	NRC: 0.35, SAA:0.33
FABRIC THICKNESS 0.013 in.	ENVIRONMENTAL BENEFITS	RoHS-LeadFree
OPENNESS ~1%		
UV BLOCKAGE ~99%		
COMPOSITION 100% Fiberglass/ EVA Coating		
WARRANTY 10-Years Interior		



Care & Handling

Remove dust with vacuum cleaner or compressed air. Do not scrub. Do not use solvents or any abrasive substance which might damage the coating of the fabric. Clean with a sponge or a soft brush dipped in soapy water using mild detergent. Rinse with clean water. Leave the blind down until completely dry. You can also very gently rub the fabric with a clean white pencil eraser to remove small stains.