

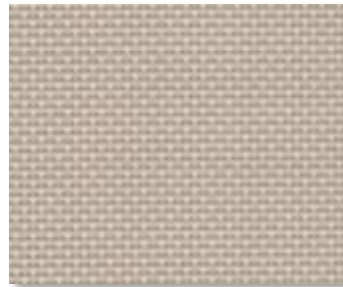
## Solo Screen 3%



WHITE



WHITE/ BEIGE



BEIGE



BEIGE/ GREY



TAUPE



WHITE/ GREY



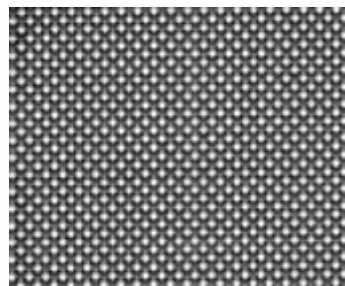
WHITE/ BIRCH



ASH



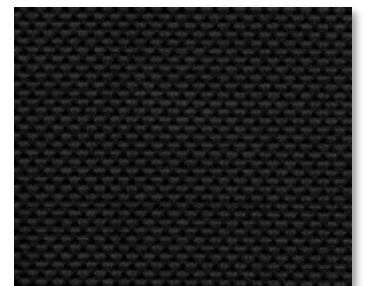
SLATE



BLACK/ PEWTER



BLACK/ BRONZE



BLACK

### SPECIFICATION

**WIDTHS** 98" and 118"

**ROLL LENGTH** 32.8 Linear Yards

**FABRIC WEIGHT** 12.98 oz/yd<sup>2</sup>

**FABRIC THICKNESS** 0.024 in.

**OPENNESS** ~3%

**UV BLOCKAGE** ~97%

**COMPOSITION** 30% Polyester, 70% PVC

**PRINTABLE** Yes

**WARRANTY** 10-Years

**FIRE CLASSIFICATION** NFPA 701 TM#1 (small scale) TM#2 (large scale)  
 NFPA 101 (Class A Rating)  
 California U.S. Title 19 (small scale)



### Care & Handling

Remove dust with vacuum cleaner or compressed air. Do not scrub. Do not use solvents or any abrasive substance which might damage the coating of the fabric. Clean with a sponge or a soft brush dipped in soapy water using mild detergent. Rinse with clean water. Leave the blind down until completely dry. You can also very gently rub the fabric with a clean white pencil eraser to remove small stains.