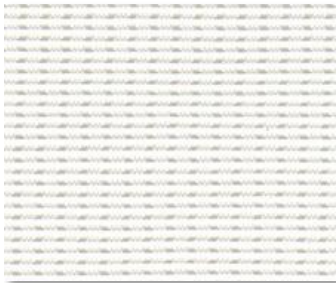


SHEERWEAVE | PERFORMANCE 3000 14%



P01 PEARL WHITE



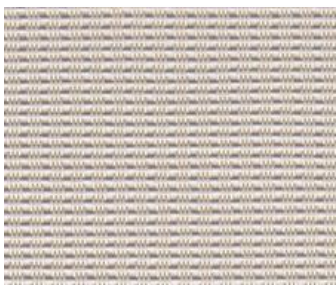
Q02 CUSTARD CREAM



V01 PALE GREY



Q01 MUSHROOM SAND



Q17 SAND DOLLAR



Q19 HONEY SAGE



V02 NINJA GREY



Q18 ESPRESSO



Q04 CHOCOLATE

SPECIFICATION

WIDTHS 72" and 96"

ROLL LENGTH 30 Linear Yards

FABRIC WEIGHT 13.46 oz/yd²

FABRIC THICKNESS 0.028 in.

OPENNESS ~14%

UV BLOCKAGE ~86%

COMPOSITION 35% Fiberglass, 65% Vinyl on Fiberglass
 31% Polyester, 69% Vinyl on Polyester

PRINTABLE Yes

FIRE CLASSIFICATION California U.S. Title 19 (small scale) NFPA 701 TM#1 (small scale) TM#2 (large scale)
 NFPA 101 (Class A Rating) IBC Section 803.1.1 (Class A Rating) BS 5867 Part 2 Type B Performance
 NFPA 701 CAN/ULC-S 109-03 (large and small scale)
 CAN/CGSB2-4.162-M80
 M1 (NF-P-92 503) B2 (DIN 4102-1)

BACTERIA/ FUNGAL RESISTANCE ASTM E 2180 ASTM G21 AATCC30 Part 3 ASTM D 3273 ASTM G22 GREENGUARD Mold and Bacteria Standard ASTM 6329 includes Microban antimicrobial additives

LEAD FREE RoHS/Directive 2002/95/EC REACH (EC 1907/2006) compliant ANSI/WCMA A 100.1-2007 for lead content
 US Consumer Product Safety Commission Section 101

WARRANTY 10-Year (Interior), 5-Year (Exterior)

