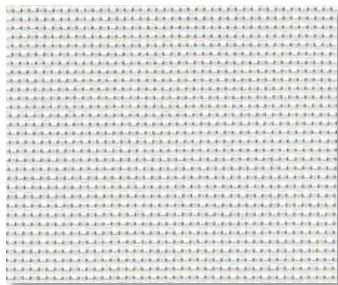


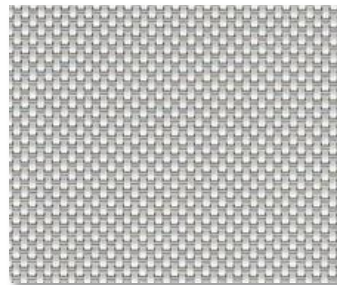
## SHEERWEAVE | PERFORMANCE 2410+ 3% Metallized Fabric



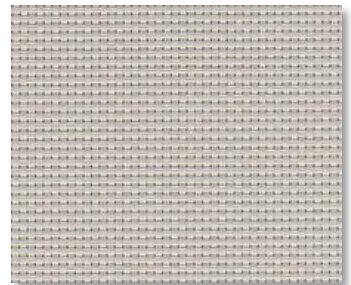
P12 OYSTER



P13 OYSTER/ BEIGE



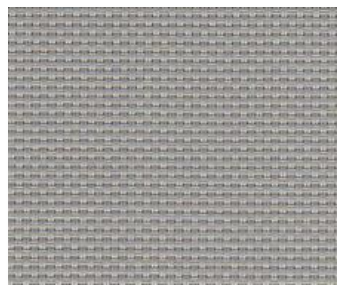
P14 OYSTER/ PEARL-GRAY



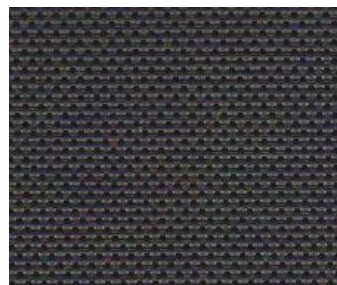
Q20 BEIGE



Q21 BEIGE/ PEARL-GRAY



V20 PEARL/ GRAY



V21 CHARCOAL



V22 CHARCOAL/ GRAY



V24 CHARCOAL/ CHESTNUT



V32 CHARCOAL/ ALPACA

### SPECIFICATION

**WIDTHS** 63" and 96"  
**ROLL LENGTH** 30 Linear Yards  
**FABRIC WEIGHT** 14.1 oz/yd<sup>2</sup>  
**FABRIC THICKNESS** 0.019 in.  
**OPENNESS** ~3%  
**UV BLOCKAGE** ~97%  
**COMPOSITION** 37% Fiberglass, 63% Vinyl on Fiberglass  
 2% Aluminum Coating  
**ACCOUSTICAL VALUE** NRC .25 / SAA .23  
**PRINTABLE** No

**FIRE CLASSIFICATION** California U.S. Title 19 (small scale) NFPA 701 TM#1 (small scale) TM#2 (large scale)  
 NFPA 101 (Class A Rating) IBC Section 803.1.1 (Class A Rating) BS 5867 Part 2 Type B Performance  
 NFPA 701 CAN/ULC-S 109-03 (large and small scale)  
 CAN/CGSB2-4.162-M80  
 M1 (NF-P-92 503) B2 (DIN 4102-1)

**BACTERIA/ FUNGAL RESISTANCE** ASTM E 2180 ASTM G21 AATCC30 Part 3 ASTM D 3273 ASTM G22 GREENGUARD Mold and Bacteria Standard ASTM 6329 includes Microban antimicrobial additives

**LEAD FREE** RoHS/Directive 2002/95/EC REACH (EC 1907/2006) compliant ANSI/WCMA A 100.1-2007 for lead content  
 US Consumer Product Safety Commission Section 101

**WARRANTY** 5-Year (Interior)

