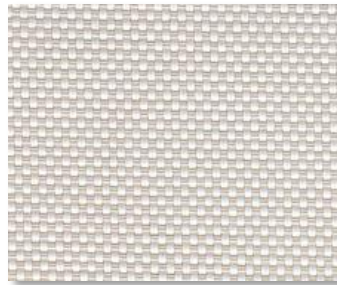


SHEERWEAVE | 2360 10%



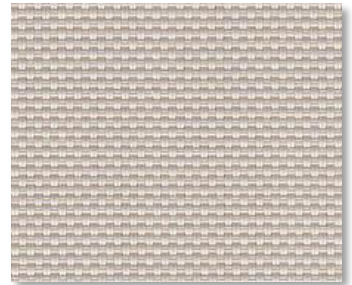
P12 OYSTER



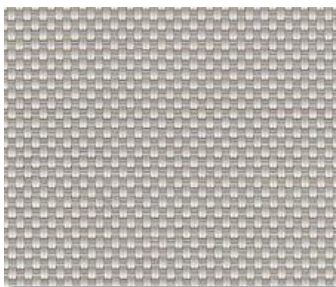
P13 OYSTER/ BEIGE



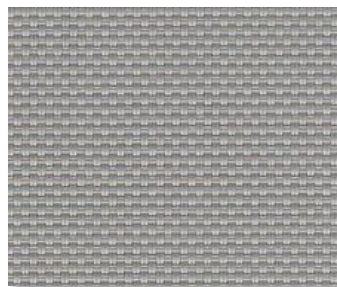
P14 OYSTER/ PEARL-GRAY



Q20 BEIGE



Q21 BEIGE/ PEARL-GRAY



V20 PEARL/ GRAY



V21 CHARCOAL



V22 CHARCOAL/ GRAY



V24 CHARCOAL/ CHESTNUT



V32 CHARCOAL/ ALPACA

SPECIFICATION

WIDTHS 63", 98" and 126"
ROLL LENGTH 30 Linear Yards
FABRIC WEIGHT 10.4 oz/yd²
FABRIC THICKNESS 0.019 in.
OPENNESS ~10%
UV BLOCKAGE ~90%
COMPOSITION 35% Fiberglass, 65% Vinyl on Fiberglass
ACCOUSTICAL VALUE NRC .05/ SAA .06
PRINTABLE Yes

FIRE CLASSIFICATION NFPA 701 TM#1 (small scale) TM#2 (large scale)
 NFPA 101 (Class A Rating)
 California U.S. Title 19 (small scale)
 BS 5867 Part 2 Type B Performance
 CAN/ULC-S 109 (large and small scale)
 CAN/CGSB2-4.162-M80
 IBC Section 803.1.1 (Class A Rating)

BACTERIA/ FUNGAL RESISTANCE ASTM E 2180 ASTM G21 AATCC30 Part 3 ASTM D 3273 ASTM G22 GREENGUARD Mold and Bacteria Standard ASTM 6329 includes Microban antimicrobial additives

LEAD FREE RoHS/Directive 2002/95/EC REACH (EC 1907/2006) compliant ANSI/WCMA A 100.1-2007 for lead content US Consumer Product Safety Commission Section 101

WARRANTY 10-Year (Interior), 5-Year (Exterior)

