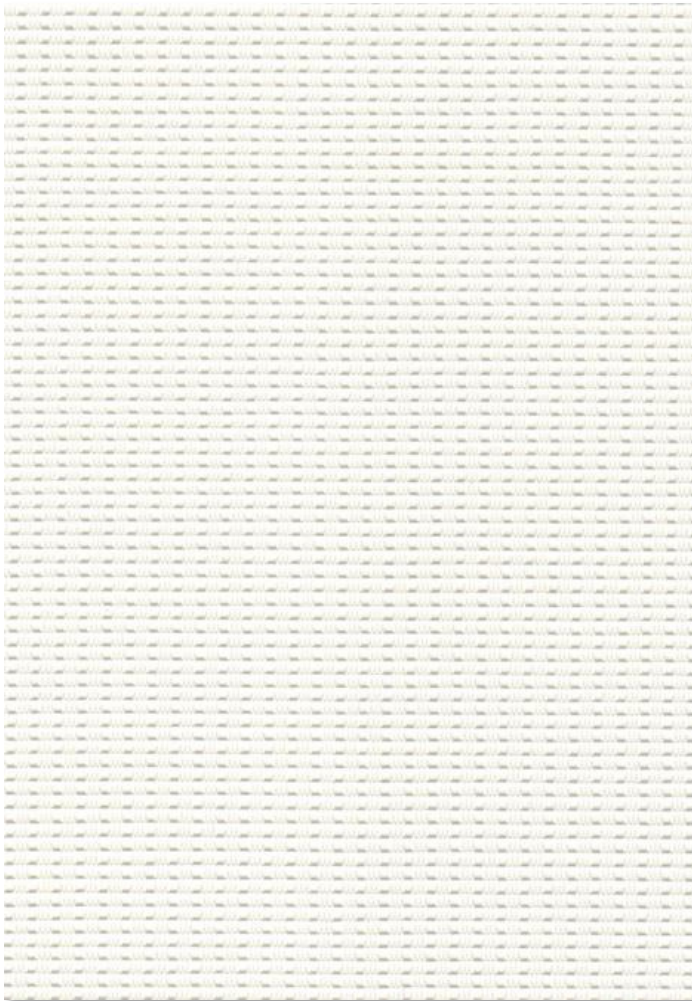
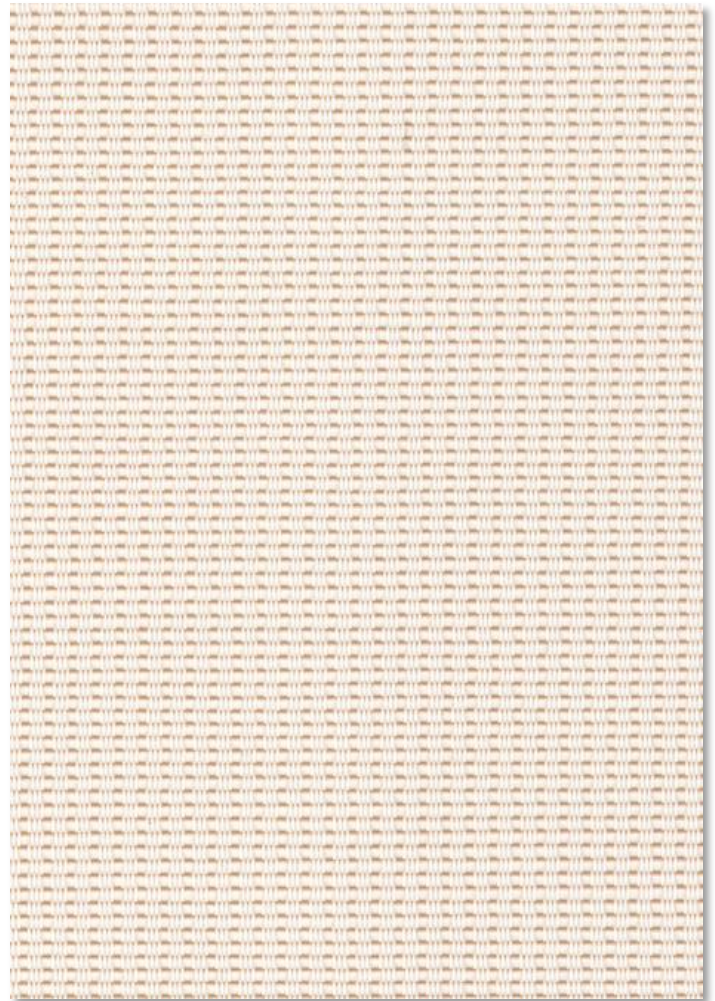


SHEERWEAVE | 1000 25%



P02 WHITE



P03 ANTIQUE WHITE

SPECIFICATION

WIDTHS 36", 48", 72", 84" and 96"
ROLL LENGTH 30 Linear Yards
FABRIC WEIGHT 8.8 oz/yd²
FABRIC THICKNESS 0.02 in.
OPENNESS ~25%
UV BLOCKAGE ~75%
COMPOSITION 35% Fiberglass, 65% Vinyl on Fiberglass
PRINTABLE Yes

FIRE CLASSIFICATION California U.S. Title 19 (small scale) NFPA 701 TM#1 (small scale) TM#2 (large scale)
 NFPA 101 (Class A Rating) IBC Section 803.1.1 (Class A Rating) BS 5867 Part 2 Type B Performance
 NFPA 701 CAN/ULC-S 109-03 (large and small scale)
 CAN/CGSB2-4.162-M80
 M1 (NF-P-92 503) B2 (DIN 4102-1)

BACTERIA/ FUNGAL RESISTANCE ASTM E 2180 ASTM G21 AATCC30 Part 3 ASTM D 3273 ASTM G22 GREENGUARD Mold and Bacteria Standard ASTM 6329 includes Microban antimicrobial additives

LEAD FREE RoHS/Directive 2002/95/EC REACH (EC 1907/2006) compliant ANSI/WCMA A 100.1-2007 for lead content
 US Consumer Product Safety Commission Section 101

WARRANTY 10-Year (Interior), 5-Year (Exterior)

