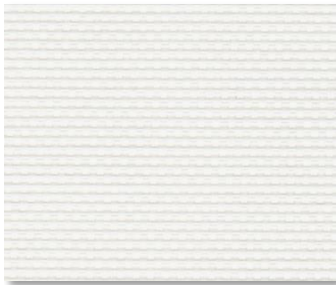
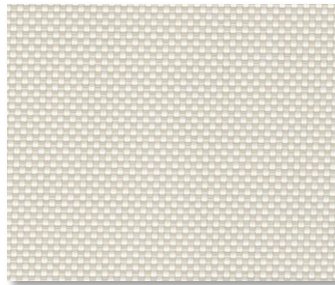


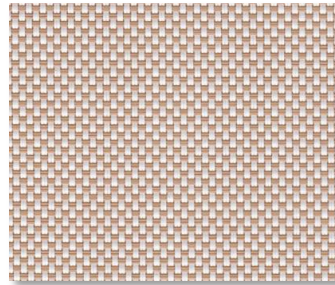
## Infinity2 1%



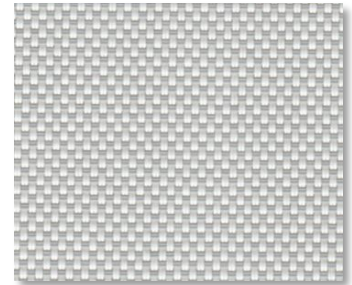
PG1 COTTON



PG2 ALMOND



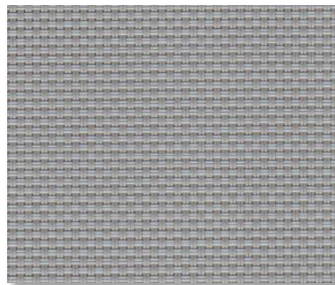
PG3 WHEAT



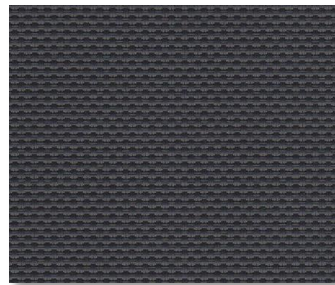
PG4 STONE



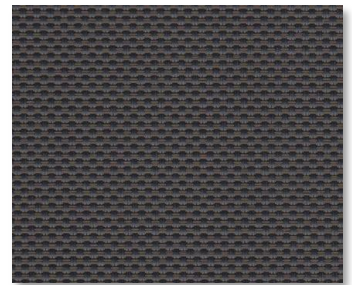
QG1 BARLEY



VG1 NICKEL



VG2 MIDNIGHT



VG3 BARK



VG4 SLATE

### SPECIFICATION

**WIDTHS** 63" and 98"

**ROLL LENGTH** 30 Linear Yards

**FABRIC WEIGHT** 13.90 oz/yd<sup>2</sup>

**FABRIC THICKNESS** 0.032 in.

**OPENNESS** ~1%

**UV BLOCKAGE** ~99%

**COMPOSITION** 100% Thermoplastic Olefin, 20% TPO Fiber Yarn/80% TPO Coating on TPO Yarn

**WARRANTY** 5-Years Interior

**BACTERIAL AND RESISTANCE**

**ACOUSTICAL PERFORMANCE ENVIRONMENTAL BENEFITS**

**FIRE CLASSIFICATION**

ASTM E 2180, ASTM G21

NRC 0.20 / SAA 0.23

Certified to GREENGUARD and GREENGUARD Gold

NFPA 701 TM#1 (small scale), NFPA 101 (Class A Rating), CAN/ULC-S 109 (large scale), IBC Section 803.1.1 (Class A Rating)



### Care & Handling

Remove dust with vacuum cleaner or compressed air. Do not scrub. Do not use solvents or any abrasive substance which might damage the coating of the fabric. Clean with a sponge or a soft brush dipped in soapy water using mild detergent. Rinse with clean water. Leave the blind down until completely dry. You can also very gently rub the fabric with a clean white pencil eraser to remove small stains.