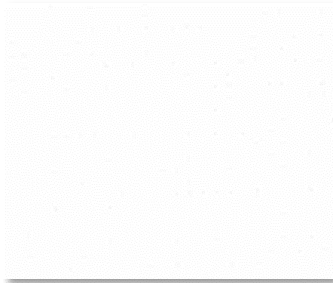


SHEERWEAVE | 8000 3%



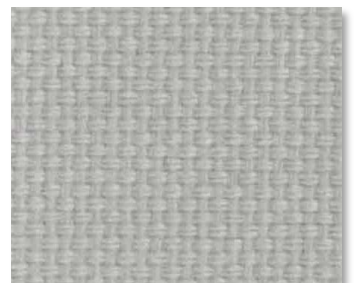
S01 SNOW



S02 EGGSHELL



S03 ECRU



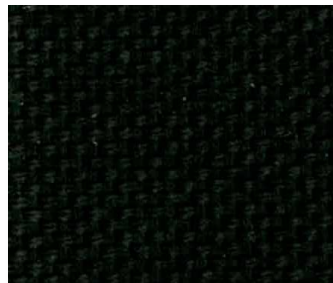
S04 SILVER



S05 SMOKE



S06 SEAL



S07 KOHL

SPECIFICATION

WIDTHS 118"

ROLL LENGTH 30" Linear Yards

FABRIC WEIGHT 7.35 oz/yd²

FABRIC THICKNESS 0.019 in.

OPENNESS ~3%

UV BLOCKAGE ~97%

COMPOSITION 100% Polyester

WARRANTY 5- Years Interior

**BACTERIAL AND
 RESISTANCE
 ENVIRONMENTAL
 BENEFITS
 ACOUSTICAL
 PERFORMANCE**

FIRE CLASSIFICATION

ASTM G21, AATCC 174-1998 Part II and III

Certified to GREENGUARD

NRC 0.00 / SAA 0.22

California U.S. Title 19 (small scale), BS 5867 2008 Part 2 Type B Performance, IBC Section 803.1.1 (Class A Rating), NFPA 701 TM#1 (small scale), NFPA 701 TM#2 (large scale), CAN/ULC-S 109 (large and small scale), CAN/CGSB2-4. 162-M80, B1 (DIN 4102-1), NFPA 101 (Class A Rating)



Care & Handling

Remove dust with vacuum cleaner or compressed air. Do not scrub. Do not use solvents or any abrasive substance which might damage the coating of the fabric. Clean with a sponge or a soft brush dipped in soapy water using mild detergent. Rinse with clean water. Leave the blind down until completely dry. You can also very gently rub the fabric with a clean white pencil eraser to remove small stains.