

## SHEERWEAVE | 7800 BLACKOUT



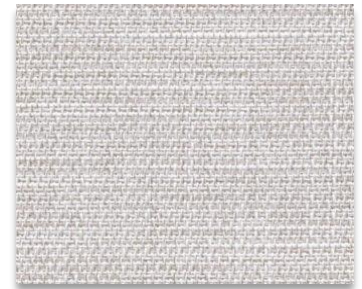
UB0 BLANCO



UB1 ALMOND



UB2 RAFFIA



UB3 DOVE



UB4 VINE



UB5 FLEECE



UB6 ASPEN



UB7 FOSSIL

### SPECIFICATION

**WIDTHS** 118"

**ROLL LENGTH** 22 Linear Yards

**FABRIC WEIGHT** 12.90 oz/yd<sup>2</sup>

**FABRIC THICKNESS** 0.026 in.

**OPENNESS** Blackout

**COMPOSITION** 100% Polyester with Foamed Coating

**WARRANTY** 5- Years Exterior

**BACTERIAL AND RESISTANCE**

**ACOUSTICAL PERFORMANCE**

**UV PROTECTION**

**FIRE CLASSIFICATION**

ASTM G21-96, AATCC 174-1998 Part II and III

NRC 0.10 / SAA 0.08

Seal of Approval by the Melanoma International Foundation

NFPA 701 TM#1 (small scale)



### Care & Handling

Remove dust with vacuum cleaner or compressed air. Do not scrub. Do not use solvents or any abrasive substance which might damage the coating of the fabric. Clean with a sponge or a soft brush dipped in soapy water using mild detergent. Rinse with clean water. Leave the blind down until completely dry. You can also very gently rub the fabric with a clean white pencil eraser to remove small stains.