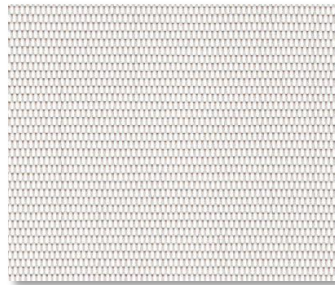


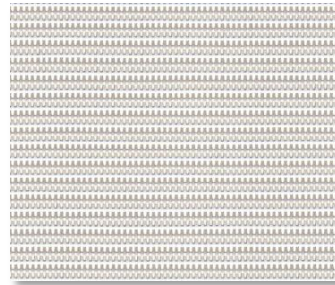
SHEERWEAVE | 4800 1%



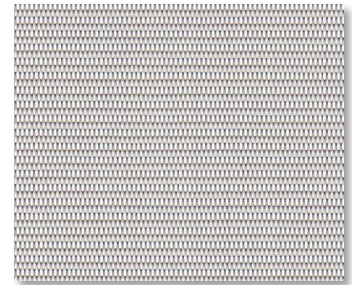
P06 CHALK



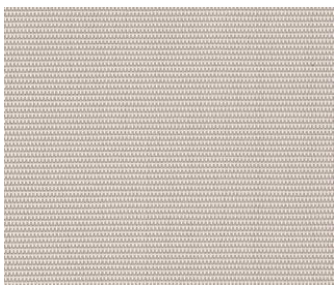
P75 PEARL



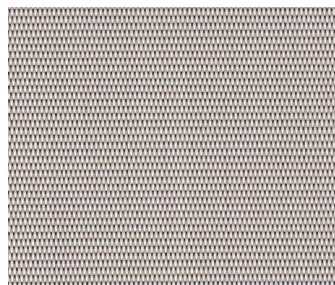
P07 ALABASTER



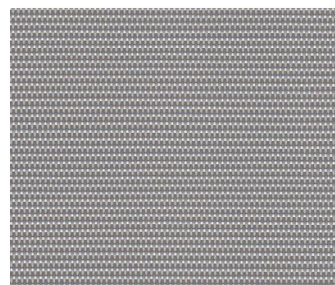
V16 GREY



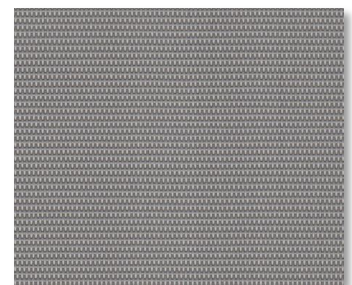
Q97 SAND



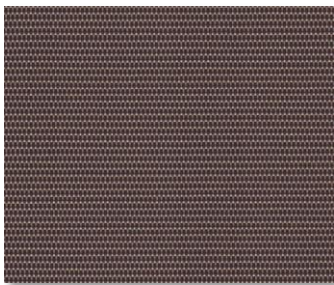
Q99 TAUPE



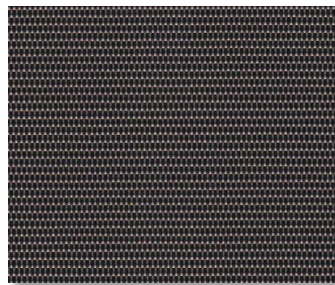
V60 CLAY



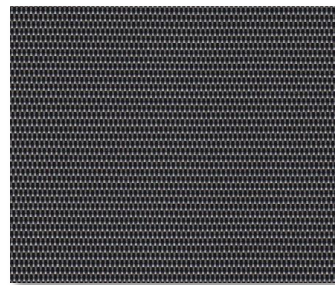
V59 FLEECE



Q98 MOCHA



V61 MINK



V62 FLINT



V10 EBONY

SPECIFICATION

WIDTHS 63", 98" AND 126"

ROLL LENGTH 30 Linear Yards

FABRIC WEIGHT 18.50 oz/yd²

FABRIC THICKNESS 0.036 in.

OPENNESS ~1%

UV BLOCKAGE ~99%

COMPOSITION 24% Polyester, 76% Vinyl on Polyester

WARRANTY 10-Years Interior, 5- Years Exterior

BACTERIAL AND RESISTANCE

ACOUSTICAL PERFORMANCE

ENVIRONMENTAL BENEFITS

FIRE CLASSIFICATION

ASTM E 2180, ASTM G21, ASTM G22, AATCC30 Part 3, ASTM D 3273

NRC 0.30 / SAA 0.31

Certified to GREENGUARD and GREENGUARD Gold

California U.S. Title 19 (small scale), NFPA 701 TM#1 (small scale), NFPA 101 (Class A Rating), IBC Section 803.1.1 (Class A Rating), BS 5867 Part 2 Type B Performance, NFPA 701 TM#2 (large scale), CAN/ ULC-S 109 (large and small scale), CAN/CGSB2-4.162-M80



Care & Handling

Remove dust with vacuum cleaner or compressed air. Do not scrub. Do not use solvents or any abrasive substance which might damage the coating of the fabric. Clean with a sponge or a soft brush dipped in soapy water using mild detergent. Rinse with clean water. Leave the blind down until completely dry. You can also very gently rub the fabric with a clean white pencil eraser to remove small stains.