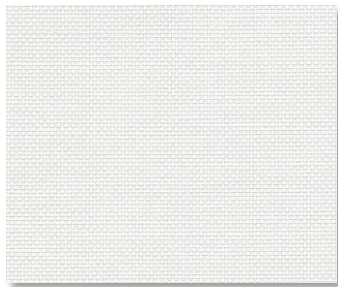
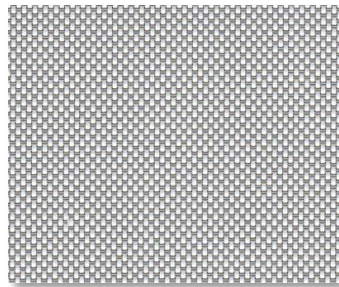


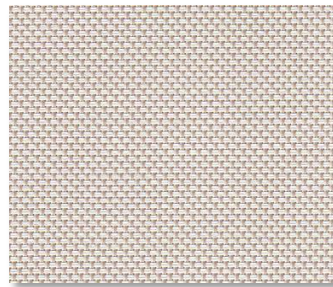
SHEERWEAVE | 4500 5%



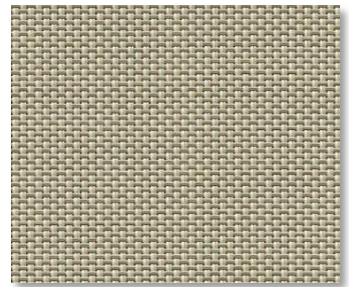
P06 CHALK



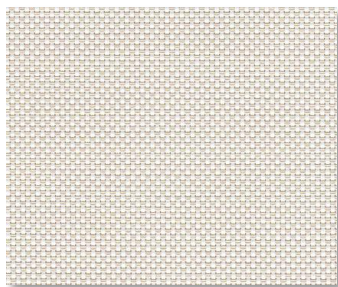
P10 GRANITE



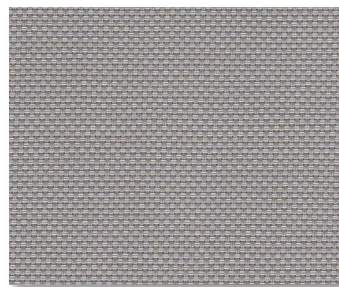
Q59 ECRU



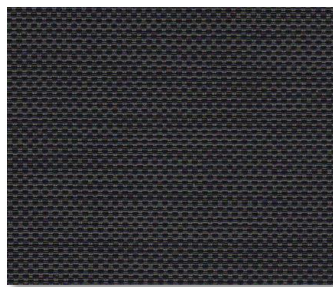
Q60 GOLDEN SAND



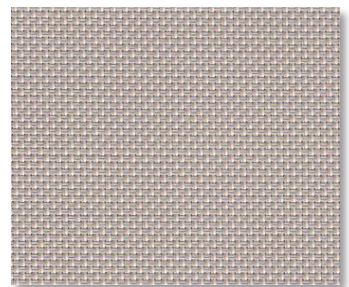
U32 LINEN



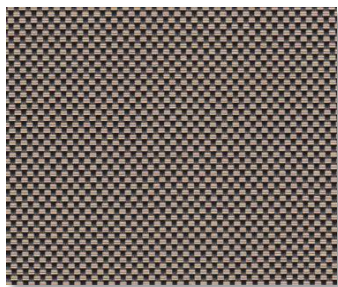
V07 PEWTER



V10 EBONY



V44 SANDSTONE



V95 CAPPUCCINO



V96 DARK BRONZE

SPECIFICATION

WIDTHS 63", 98" and 126"

ROLL LENGTH 30 Linear Yards

FABRIC WEIGHT 14.40 oz/yd²

FABRIC THICKNESS 0.024 in.

OPENNESS ~5%

UV BLOCKAGE ~95%

COMPOSITION 17% Polyester, 83% Vinyl on Polyester

WARRANTY 5-Years Interior, 10- Years Exterior

BACTERIAL AND RESISTANCE

ACOUSTICAL PERFORMANCE ENVIRONMENTAL BENEFITS

FIRE CLASSIFICATION

ASTM E 2180, ASTM G21, ASTM G22, AATCC30

NRC 0.15 / SAA 0.17

Certified to GREENGUARD and GREENGUARD Gold

California U.S. Title 19 (small scale), NFPA 701 TM#1 (small scale), NFPA 101 (Class A Rating), IBC Section 803.1.1 (Class A Rating), BS 5867 Part 2 Type B Performance, NFPA 701 TM#2 (large scale), CAN/ULC-S 109 (large and small scale)



Care & Handling

Remove dust with vacuum cleaner or compressed air. Do not scrub. Do not use solvents or any abrasive substance which might damage the coating of the fabric. Clean with a sponge or a soft brush dipped in soapy water using mild detergent. Rinse with clean water. Leave the blind down until completely dry. You can also very gently rub the fabric with a clean white pencil eraser to remove small stains.